

HALMASHAURI YA WIILAYA YA SAME.

OFISI YA KIJJI
KIJJI CHA NDUNGU
S.L.P 1
NDUNGU – SAME.

KUMB Na K/ND/1/10.

11/6/2004.

MWL. M. F. KIANGI (ID. No.0502498).
S.L.P 737
USARIVER.

YAH: KUFANYA UTAFITI KIMASOMO KIJJI CHA NDUNGU.

Kichwa cha habari hapo juu chahusika.

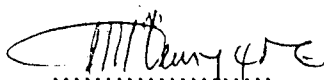
Rejea barua yako ya Tarehe 10/6/2004 kuhusu ombi lako la kufanya utafiti kimasomo kijijini mwetu. Kwa barua hii tunakukubalia kufanya utafiti huo katika Kijiji chetu.

Tunategemea kuwa utafiti huo utanufaisha wakazi na jamii kwa ujumla.

Tunakutakia mafanikio mema.

KARIBU SANA.

Wako,



Nyeru .K. Nyeru.
AFISA MTENDAJI KIJJI
NDUNGU.

NAKALA:

1. Afisa Mtendaji Kata
Ndungu - Kwa taarifa.
2. Mkurugenzi
Community Economic Development Program
Open University of Tanzania
P.O. Box 23049
Dar es Salaam.

WORK PLAN

APPENDIX IIa

[illegible]

TRAINING SCHEDULE ON FOREST CONSERVATION AT NDUNGU VILLAGE.

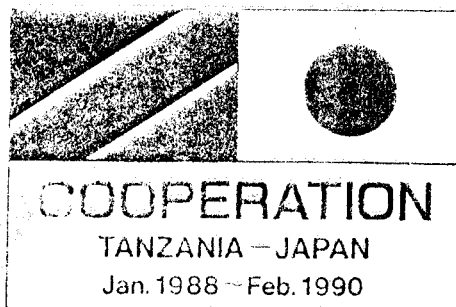
[illegible]

THE UNITED REPUBLIC OF TANZANIA

THE NDUNGU AGRICULTURAL DEVELOPMENT PROJECT



REGIONAL DEVELOPMENT DIRECTOR KILIMANJARO

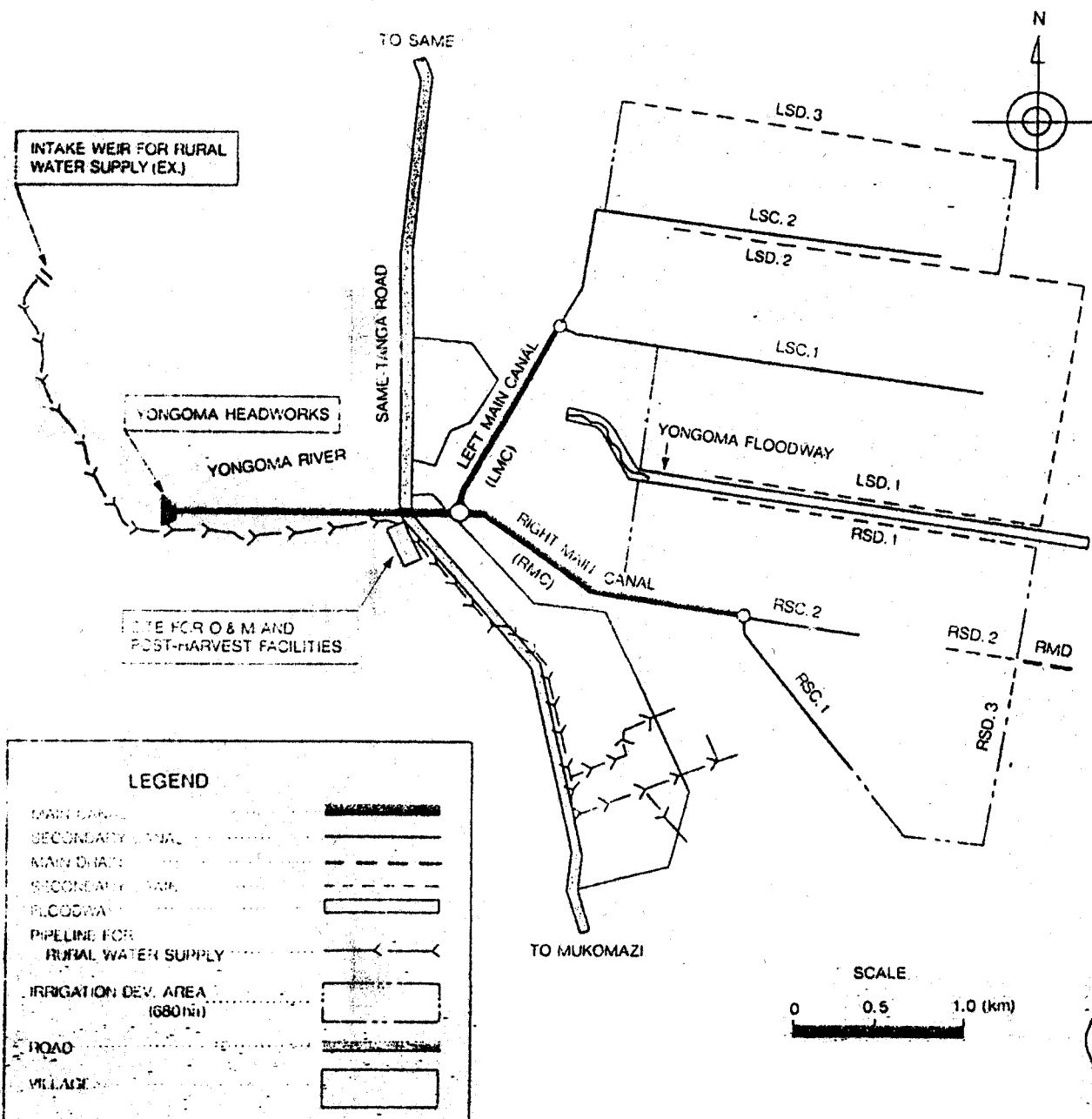
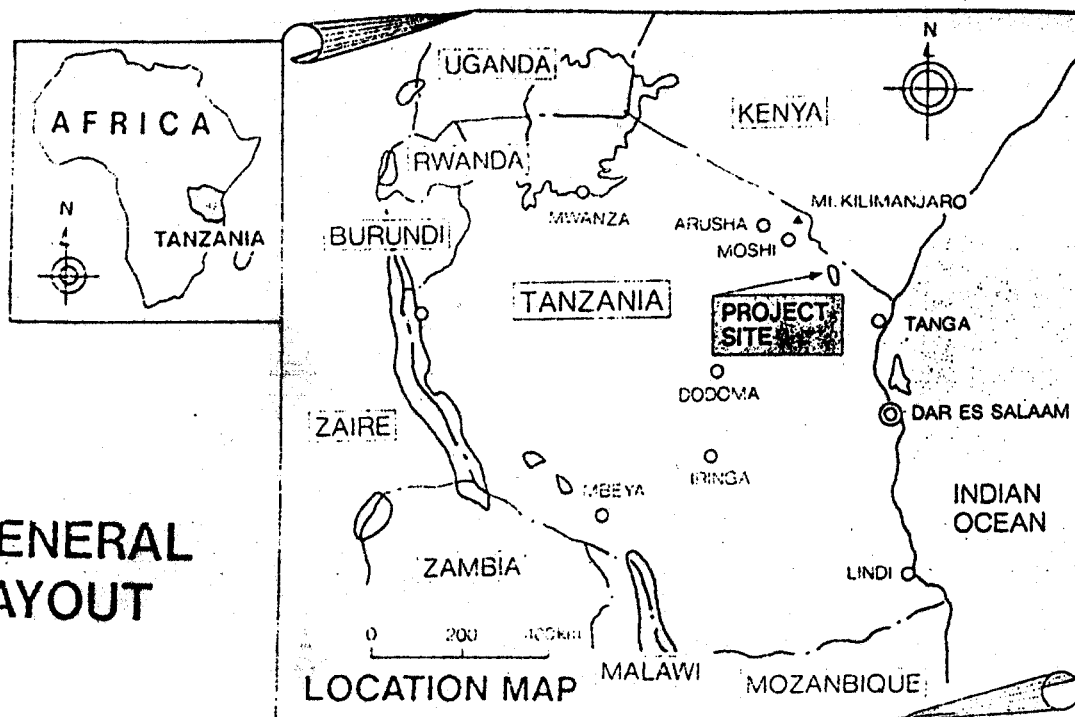


NADP (The Ndungu Agricultural Development Project)

OUTLINE OF THE PROJECT

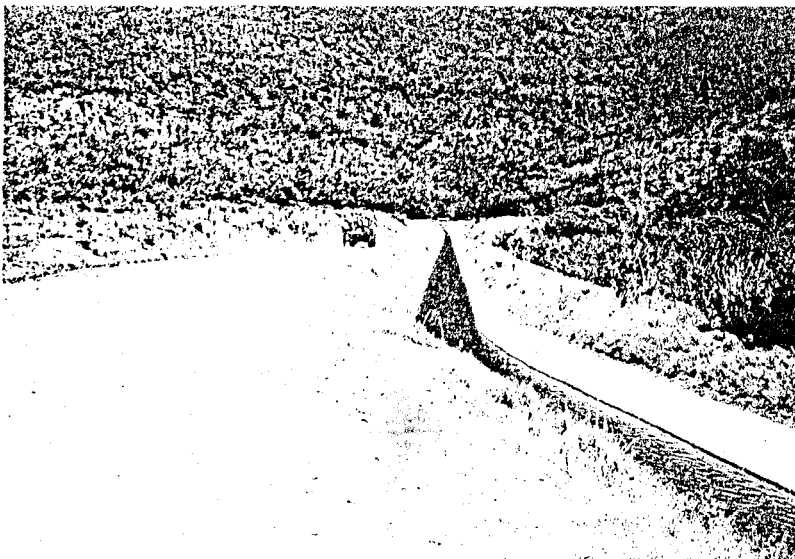
- BACKGROUND** : This is one among the projects for which the Government of Japan has extended its grant to the Government of the United Republic of Tanzania, promoted through;
- (i) Feasibility Study on the Mkomazi Valley Area Irrigation Development Project in 1982/83,
 - (ii) Basic Design Study on the Project in December 1986 to May 1987 and,
 - (iii) Exchange of Notes signed in July 1987, and August 1988 between both Governments.
- LOCATION** : Ndungu Division, Same District, Kilimanjaro Region, the United Republic of Tanzania.
- TOPOGRAPHY & CLIMATE** : The area comprised of alluvial plains and seasonal marshes formed mainly by the Yongoma river, which slope is about 1:350 and elevation ranges from 507m to 520m. Based on rainfall distribution, a year in the area can be divided into two seasons. The rainy season last from November to May and the dry season from June to October. More than 90% of the annual rainfall occurs in the rainy season and amounts to about 660mm on an average. The monthly mean temperature ranges from 22°C to 28°C with little seasonal variation.
- PROJECT FEATURES** : The main features of the Project are;
- (i) Land consolidation for agricultural development of 680 ha.,
 - (ii) Construction of O & M, training facilities and post-harvest facilities which a floor area of 2,590m²,
 - (iii) Improvement of rural water supply system for 13,200 persons, and
 - (iv) Supply of O & M and post-harvest equipment.
- PROJECT BENEFITS** : The benefits to be expected from the Project are;
- (i) Improvement of agricultural production, farming conditions and rice quality.
 - (ii) Improvement of living conditions,
 - (iii) Reinforcement of cooperations,
 - (iv) Demonstration effects, and
 - (v) Improvement of social welfare.
- PROJECT OPERATION** : Regional Development Director's Office takes charge of the project operation and maintenance in cooperation with the specific organization, such as Project O & M Office, VUASU Cooperative Union and Water Development Office.

GENERAL LAYOUT



A black and white photograph showing a concrete dam or weir structure. On the left side of the dam, there is a small, square, multi-story building or observation tower. The dam spans across a body of water, and the background consists of a steep, wooded hillside. The foreground shows the water surface and some rocky banks.

Catchment Area : 70.5 km²
Type : Fixed Type
Weir height x length : 5.5m x 25m
Scouring Sluice Gate : 2.5m x 2.0m
Design Flood Discharge : 150m³/sec



Type : Concrete Block Lining
Total Length : Main Canals 4.7km
Secondary Canals 6.1km
Maximum Design Discharge : 0.925m³/sec
Related Structures : Turnouts, Checks and etc.

Type	:	Morrum Pavement
Road Width	:	Width 5.0m Pavement Width 4.0m
Total Length	:	27.4km

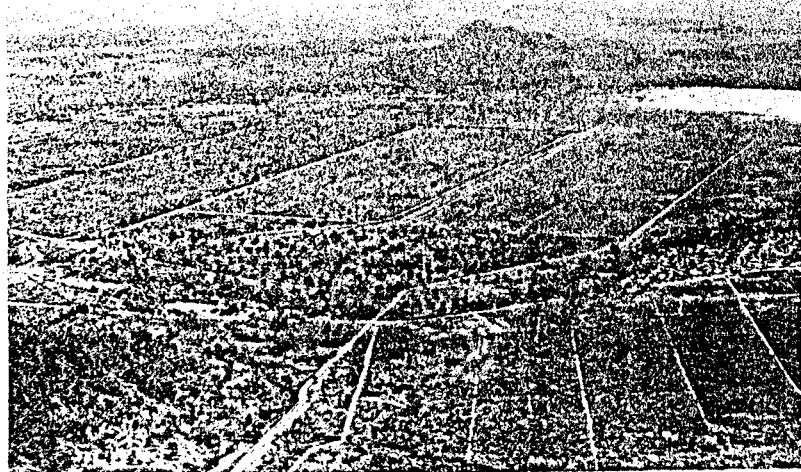
A black and white photograph of a landscape. The foreground is dominated by a field with distinct, parallel furrows or tracks, suggesting recent agricultural activity or vehicle movement. The field extends towards a line of trees or shrubs in the middle ground. In the background, there are rolling hills or mountains under a bright, possibly overexposed sky. The overall image has a grainy, high-contrast quality.

Type : Earth Canal
Total Length : 3.5km
Base Width : 30m

Type : Earth Canal
Total Length : 7.6km
Base Width : 3m
Related Structures : Culverts, Drops and etc.

Type : Earth Canal
Total Length : Main & Secondary Drains
10.8km
Related Structures : Culverts, Drainage
Gates and etc.

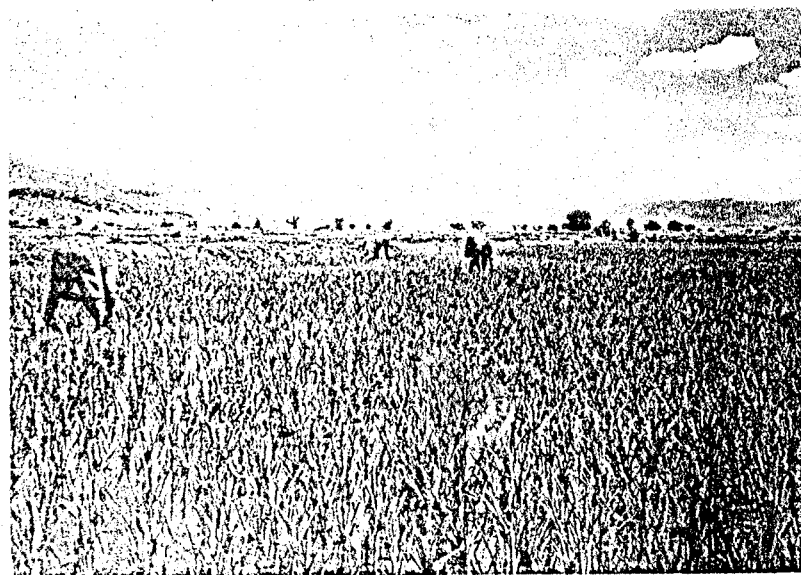
3) On-Farm Development



Development Area : 680 ha
 Plot Size : 30 x 100 m
 Irrigation Canals : Tertiary Canals and Water Courses
 Drainage Canals : Tertiary Drains and Field Drains
 Farm Roads : Branch Roads and Field Roads
 Related Structures : Division Boxes, Form Access and etc.

4) Operation of Farm

After Transplanting



Harvesting

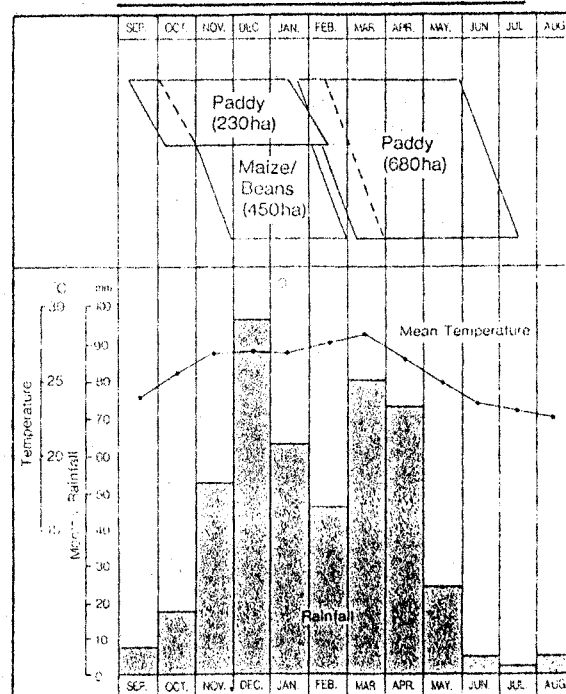


Variety : IR54
 Seedling Pitch : 20 x 20 cm

Anticipated Crop Yield and Production

	Yield	Production
Paddy (Rainy Season)	5.0 ton/ha	3,400 ton
Paddy (Dry Season)	4.5 ton/ha	1,035 ton
Total		4,435 ton
Maize (Dry Season)	2.0 ton/ha	900 ton
Beans (Dry Season)	0.8 ton/ha	360 ton

Proposed Cropping Pattern



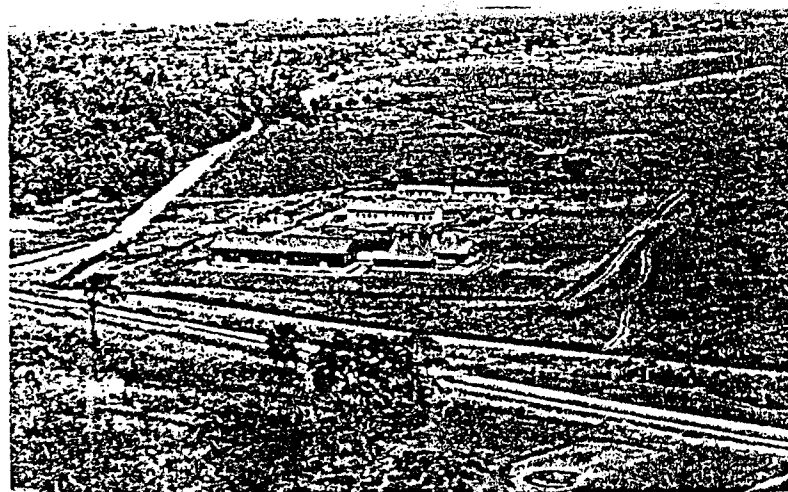
II. RURAL WATER SUPPLY



Intake Facilities
Intake and Grit-chamber

Distribution Service Facilities
Distribution Pipe : 7.1km (DCIP & PVC)
Service Pipe : 1.6km (PVC)
Related Facilities : Public Taps, Air Valves
and etc.

III. POSTHARVEST AND O & M FACILITIES



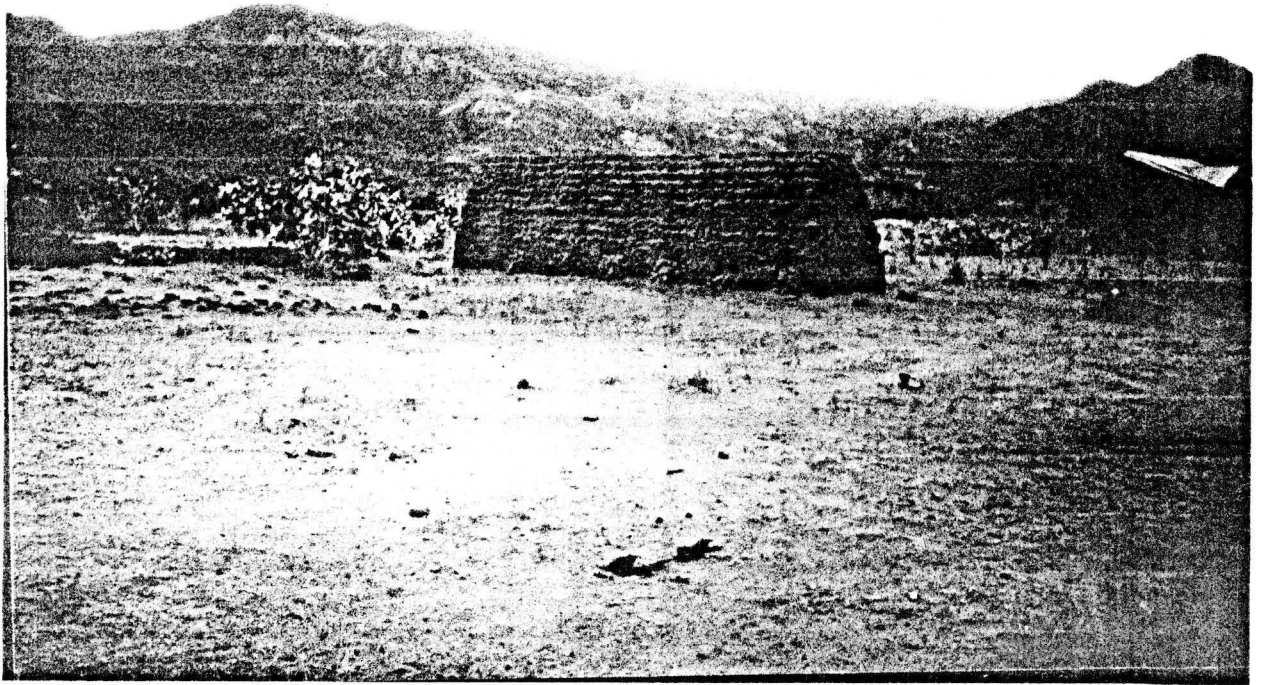
Postharvest Facilities
Drying House, Rice Mill House, Multi-Purpose Warehouse, Sun-Drying Yard, Office and Guard House
Total Floor Area : 1866m²
Related Equipment : Dryer (2 ton/unit, 6 units), Ricemill (0.7 ton/hr, 1 set) and etc.

O & M And Training Facilities
Office, Dormitory and Workshop
Total Floor Area : 720m²
Related Equipment : Bulldozer, Backhoe, Cargo Truck and etc.

FINANCE : JAPANESE GRANT AID
EMPLOYER : REGIONAL DEVELOPMENT DIRECTOR,
KILIMANJARO REGION OF THE UNITED
REPUBLIC OF TANZANIA
CONSULTANT : NIPPON KOEI CO., LTD.
CONTRACTOR : KONOIKE CONSTRUCTION CO., LTD.
CONSTRUCTION PERIOD : JAN. 1988 - FEB. 1990



ERODED AREA (GULLY EROSION)



BRICK MAKING.



TREES FELLED AREA.



RICE HUSKS THROWN

- The stove can either be single pot or multi-pot depending on the user preference.
- Different sizes can be constructed to suit households, social centres and SMEs needs.

DON'T USE THIS;



Three Stones Stove

GO FOR THIS;



Modern Stones/Bricks Built Firewood Stove