

SNHU



**INSIDE
THIS ISSUE:**

**USAGE
CHARTS** 2-3

**CONTEST
WINNER** 4

**FREE
MASSAGES** 4

**HOLIDAY
ACTIVITY** 5

**TRIVIA
CONTEST** 5

**TEST-TAKING
TIPS** 6

**WALK-IN
SCHEDULE** 7



**BACK
COVER:**

**HAPPY
HOLIDAYS** 8

**CONTACT
INFO.** 8

News From The Learning Center:

Winter Edition

VOLUME 2, ISSUE 2

DECEMBER 8, 2011

Peer Educator of the Month: October

Lauren Hawkins is The Learning Center's Peer Educator of the Month for October! Lauren is a senior Writing tutor and Peer Mentor. She is dedicated to helping the students with whom she works to become independent learners. This semester she volunteered to visit English classes and share information about Learning



Lauren Hawkins

Center services and writing tutoring. This month, Lauren has gone above and beyond her

duties in The Learning Center. She is always willing to help out other tutors when they need someone to cover their shifts, stay for extra time with students who need additional help, and she has been an active participant in tutor training activities. Congratulations, Lauren! The Learning Center will miss you next semester!

Peer Educator of the Month: November

Amanda Reczko has been named November's Outstanding Peer Educator for The Learning Center. Amanda was nominated by Lori DeConinck, Director, who noted the significant increase in requests for History tutoring this



Amanda Reczko

semester. She wrote: "Amanda has been truly outstanding in 'stepping up to the plate' to assist these students. Not only is she effective at tutoring all courses within the discipline of

continued on page 4

Learning Center Usage: Oct. 2010 vs. Oct. 2011

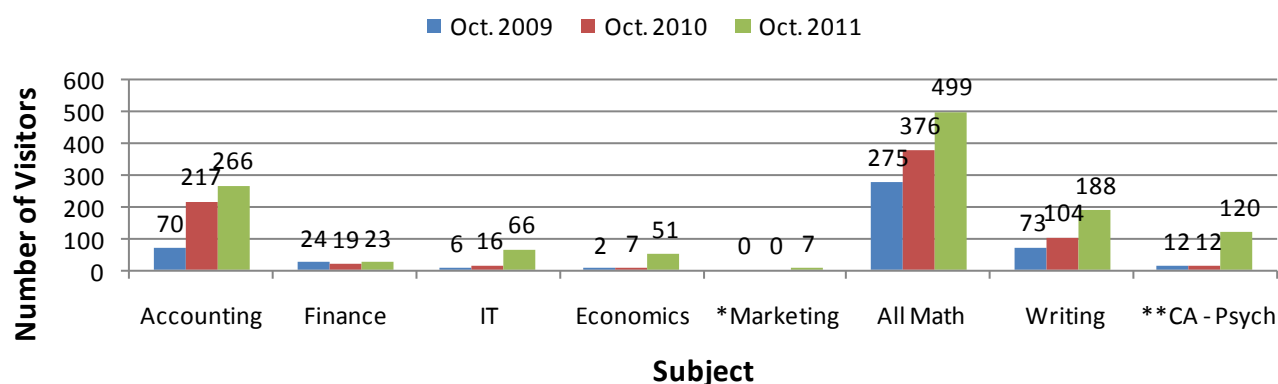
The Following charts represent a comparison of Learning Center usage in October 2009, 2010, and 2011. Across the board, the number of walk-in tutoring visits has increased from 2010 to 2011, with all demonstrating a positive

percentage increase. Specifically, Classroom Assistance for Psychology and Economics have risen drastically by 900% and 628.57% respectively. The overall amount of students served by walk-in tutoring has also increased amongst

all subjects with the exception of Finance. From October 2009 to October 2011, Finance is the only subject area to experience a decrease of students served by a small %8.33.

continued on page 3

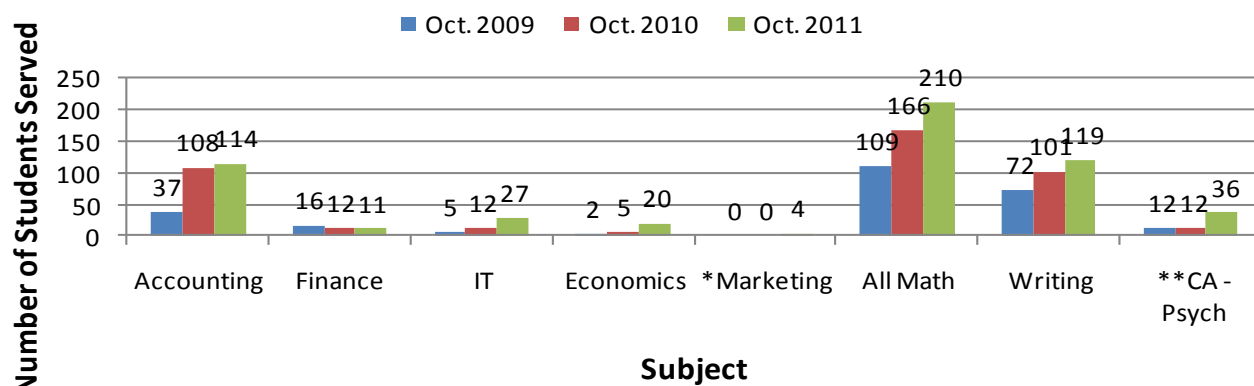
Walk-in Tutoring: Number of Visits



*Marketing walk-in tutoring was not offered in Fall 2009 or 2010.

**CA = Classroom Assistant

Walk-in Tutoring: Students Served



*Marketing walk-in tutoring was not offered in Fall 2009 or 2010.

**CA = Classroom Assistant

continued from page 2

Concerning one-to-one tutoring, each business subject area other than marketing increased by 100% or more. Marketing decreased by 50%. One-to-one tutoring for all types of math increased as well by 11.11% and writing by 66.67%. The largest gain of all subjects occurred in the

various areas of the School of Arts and Sciences by 500%. Peer mentoring continues to increase year after year regarding the number of students served and the number of overall visits. The number of students served between October 2009 and October 2011 has grown by 19.05% and 32.73% respectively.

Walk-in Tutoring Schedule

For the most up to date walk-in tutoring schedule, please visit The Learning Center page on mySNHU:

<https://my.snhu.edu/offices/LearningCenter/Walk-inTutoringSchedule/Pages/default.aspx>

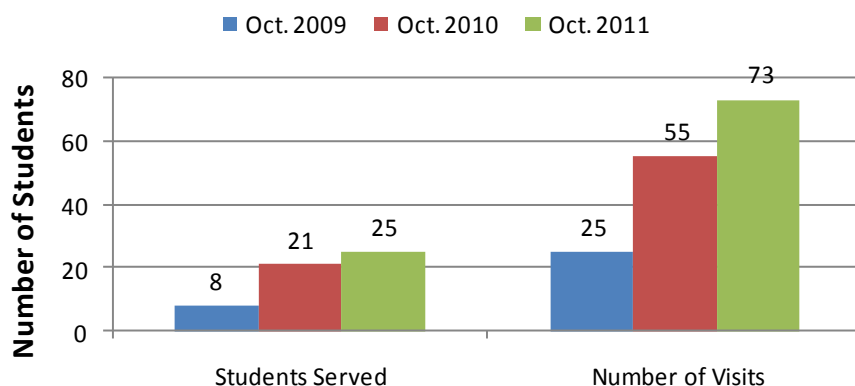
You can also find a printed version of the schedule on page 7 or at The Learning Center in Stark 15.

One-to-One Tutoring



***SAS = School of Arts and Sciences

Peer Mentoring



One-to-one Tutoring Requests

The deadline has passed to request new individualized tutoring support as the final day was Friday, November 18th.

Existing one-to-one tutoring and mentoring will continue through the end of the semester. If you have any questions or concerns, please e-mail us: TheLearningCenter@snhu.edu

SOLVE A

RIDDLE:

1) What kind of coat can only be put on when wet?

2) What jumps when it walks and sits when it stands?

3) You throw away the outside and cook the inside. Then you eat the outside and throw away the inside. What did you eat?

ANSWERS:

- 3) an ear of corn
2) a kangaroo
1) coat of paint



Candy Corn Contest



The Learning Center held a candy corn counting contest during the month of October for students who utilized walk-in tutoring services. Overall, there were 393 pieces of candy corn in the container. The closest guess without going over was



Kevin Goodfellow

379 by Kevin Goodfellow. Kevin won a \$15 gift card to the Campus Bookstore along with the candy corn. Congratulations Kevin!

Keep an eye out for future Learning Center raffles and contests where you can win great prizes!

Free Massages

The Learning Center partnered with massage therapy students from Hesser College on December 1st to provide free chair massages in The Learning Center. The massages provided some much needed stress relief and relaxation for those who attended. Thank you Hesser College massage therapy students!



continued from front page

history but she also serves as a motivational influence on those with whom she works. The study/organizational skills Amanda promotes

are invaluable in helping her tutees learn how to master difficult subjects. And her ever-present smile welcomes and puts her tutees at ease. I am exceedingly grateful to have Amanda as part of

the Learning Center team.”

Thank you, Amanda, for all you do for The Learning Center and your peers!

Gingerbread House Decorating Contest

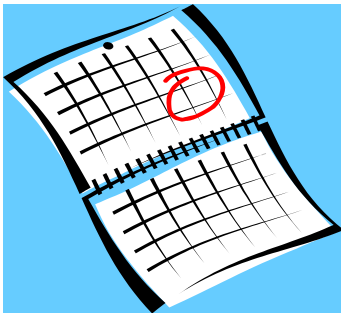
On Tuesday, December 13th from 3:30pm-6:30pm in Stark 39, get into the holiday spirit and take a study break by participating in The Learning Center's gingerbread house decorating contest! Com-

pete as a team of three to create the best gingerbread house. The winning team will receive three gift cards to Dunkin' Donuts. A gingerbread house kit and additional decorative supplies will be provided.

Stop by The Learning Center table in the Dining Hall on December 5th from 11:00am-2:00pm or in the Student Center from December 5-7th from 11:00am-2:00pm to sign up!



Are you Smarter than a Tutor? Team Trivia Game!



When: Thursday - Feb. 9th
Where: Last Chapter Pub
Time: 7:00-9:00pm

Mark your calendars, a date has been set for The Learning Center's and CAPE's second annual "Are you Smarter than a Tutor?" Team Trivia Game! On Thursday, February 9th from 7:00pm-9:00pm at The Last Chapter Pub,

teams of four will compete against one another to determine an ultimate champion by answering trivia questions from categories such as pop culture, math, history, writing, movies, music, business, geography, art, and so much more! Last year's winning team took home the grand prize of \$200 cash and several audience members and contestants won gift cards to local restaurants and stores like Mr. Mac's and Dunkin' Donuts.

Sign-ups will take place January 23rd-January 27th from 11:00am-2:00pm in both the

Dining Hall and Student Center. Do not miss out on your chance to be a contestant and win big!

Look for flyers and more information during the first week of second semester or check for updates by visiting The Learning Center's page on mySNHU: <https://my.snhu.edu/Offices/LearningCenter/EventsAndAnnouncements/Pages/default.aspx>

If you have any questions please e-mail us: TheLearningCenter@snhu.edu

Test-taking Tips for Final Exams

General Guidelines for Test-taking

- 1) Arrive early and take a moment to relax and reduce your anxiety. This brief time period will boost your confidence and give you time to think positive thoughts and focus your mind.
- 2) Listen attentively to last minute instructions given by the instructor. The teacher will almost always give you some valuable information just before handing out the test.
- 3) Read the directions very carefully, looking for specific instructions on how to proceed. Watch for details. You may find that more than one answer may be possible on multiple choice or that you only need to answer three out of the five essay questions given.
- 4) Plan how you will use the time for the test. Estimate how many minutes you will need to finish each test section and finish in the total time allotted. Bring your watch and pay close attention to the passing time. Follow your own pace and do not let the pace of others cause you to become nervous.
- 5) Determine which test sections will receive priority. It is generally best to do the section that is easiest for you especially if it has a high point total.
- 6) Keep a steady pace and do not let more difficult questions affect your attitude and steal your valuable time.
- 7) Rely on your knowledge and do not watch for patterns.
- 8) Change answers only when you are certain. The answer which comes to mind first is often correct.
- 9) When you have completed your test, use the remaining time effectively. Review the difficult questions you left. Proofread your essays. Check your grammar and spelling. Make sure you answered all questions.
- 10) Learn from your tests! When tests are returned, go through them thoroughly and see if you plan worked.

Finding these tips helpful? Get more guidelines for true-false questions, multiple-choice questions, and essay tests by visiting The Learning Center's Mentoring page on mySNHU: <https://my.snhu.edu/offices/LearningCenter/Mentoring/Pages/default.aspx> Also, check out the Study/Other Resources page where you can find help with various topics in business, math, and writing: <https://my.snhu.edu/offices/LearningCenter/StudyandOtherResources/Pages/default.aspx>

**Good luck
to all
students
during final
exams!**

The Learning Center

Open Walk-in Tutoring for Final Exams

This schedule will be in effect Monday, December 12 through Sunday, December 18

Accounting 201 & 202

DATE	TIME	ROOM
Mon.- 12/12	5:00pm- 8:00pm	Stark 12
Tues.- 12/13	3:30pm- 4:30pm 5:00pm- 8:00pm	Stark 12 Stark 12
Wed.- 12/14	2:00pm- 3:15pm 5:00pm- 8:00pm	Stark 12 Stark 12
Thurs.- 12/15	5:00pm- 8:00pm	Stark 12
Fri.- 12/16	11:00am- 12:15pm	Stark 12

Information Technology 100

DATE	TIME	ROOM
Mon.- 12/12	7:00pm- 8:00pm	Learning Center Computer Lab
Wed.- 12/14	6:00pm- 8:00pm	Learning Center Computer Lab
Sun.- 12/18	4:00pm- 6:00pm	Learning Center Computer Lab

Marketing 113

DATE	TIME	ROOM
Tues.- 12/13	6:00pm- 8:00pm	Stark 12
Thurs.- 12/15	6:00pm- 8:00pm	Stark 12

Finance 320 & 330

DATE	TIME	ROOM
Mon.- 12/12	5:00pm- 8:00pm	Stark 12
Tues.- 12/13	3:30pm- 4:30pm	Stark 12
Wed.- 12/14	2:00pm- 3:15pm 6:00pm- 8:00pm	Stark 12 Stark 12
Fri.- 12/16	12:00pm- 2:00pm	Stark 12

Economics 201 & 202

DATE	TIME	ROOM
Tues.- 12/13	3:30pm- 4:30pm	Stark 12
Wed.- 12/14	2:00pm- 3:15pm 5:00pm- 6:00pm	Stark 12 Stark 12
Thurs.- 12/15	5:00pm- 6:00pm	Stark 12
Fri.- 12/16	2:00pm- 4:00pm	Stark 12
Sun.- 12/18	4:00pm- 6:00pm	Stark 12

Writing

DATE	TIME	ROOM
Mon.- 12/12	12:30pm- 2:30pm 7:00pm- 8:00pm	Stark 12 Stark 12
Tues.- 12/13	2:00pm- 4:00pm 6:00pm- 8:00pm	Stark 12 Stark 12
Wed.- 12/14	1:00pm- 3:00pm 6:00pm- 8:00pm	Stark 12 Stark 10
Thurs.- 12/15	7:00pm- 8:00pm	Stark 12
Fri.- 12/16	11:00am- 12:00pm	Stark 12
Sun. 12/18	6:00pm- 8:00pm	Perkins Room (Library)

ELL Writing

DATE	TIME	ROOM
Mon.- 12/12	5:00pm- 7:00pm	Stark 6
Tues.- 12/13	5:00pm- 7:00pm	Stark 10
Wed.- 12/14	11:30am- 3:00pm 5:00pm- 7:00pm	Stark 10 Stark 10
Thurs.- 12/15	11:30am- 3:00pm	Stark 10

Math

DATE	TIME	ROOM
Mon.- 12/12	1:00pm- 2:00pm 5:00pm- 8:00pm 5:00pm- 6:00pm* *Math 130 Finance Review	Stark 10 Stark 10 Stark 17
Tues.- 12/13	9:30am- 10:30pm 11:00am- 12:15pm 12:30pm- 1:30pm 3:30pm- 4:45pm 5:00pm- 8:00pm	Stark 10 Stark 10 Stark 10 Stark 10 Stark 10
Wed.- 12/14	11:00am- 12:00pm 1:00pm- 2:00pm* *Math 200/210/350 ONLY 2:00pm- 3:15pm 5:00pm- 8:00pm	Stark 10 RF 3 rd Floor Lounge Stark 10 Stark 10
Thurs.- 12/15	9:30am- 10:30am 5:00pm- 8:00pm	Stark 10 Stark 10
Fri.- 12/16	11:00am- 2:00pm	Stark 10
Sun.- 12/18	4:00pm- 8:00pm	Stark 10



Happy Holidays!

The Learning Center would like to wish everyone at SNHU a happy holiday season and a healthy new year!

Have a fun and safe winter break; we look forward to seeing everyone again second semester. See you in 2012!

Information

Director: Lori DeConinck (ext. 4619)
l.deconinck@snhu.edu

Office Manager: Jill Judd (ext. 9606)
j.judd@snhu.edu

Business: Bryan Bouchard (ext. 2098)
b.bouchard@snhu.edu

Math: Kathy Willis (ext. 2148)
k.willis@snhu.edu

Writing: Ann Nicodemi (ext. 2086)
a.nicodemi@snhu.edu

Mentoring: Chad Detjen (ext. 2091)
c.detjen@snhu.edu

General Questions:
TheLearningCenter@snhu.edu

Mission Statement

The Learning Center is an academic support team that assists our students in developing the skills and confidence to achieve their academic goals and increase their self-awareness as independent thinkers.

Promoting a supportive educational environment, The Learning Center provides comprehensive, student-centered programs, resources and services.

For more information, visit us on the web:
<https://my.snhu.edu/Offices/LearningCenter/Pages/home.aspx>

Join us on Facebook:
facebook.com/SNHU.TheLearningCenter