

**8.0. APPENDIXES.****Appendix 1. Application letter**

Catherine L.Kisanga

P.O. Box 235,

IFAKARA.

10/11/2005

Chairperson

St. Maria Magdalena Ifakara Women Group.

P.O.Box 11,

IFAKARA.

RE: PROJECT ASSIGNMENT IN YOUR ORGANISATION

Dear Mrs Goa

The above heading refers.

Currently I am studying with the Southern New Hampshire University – USA (in collaboration with the Open University of Tanzania). I am pursuing a Masters' degree in Community Economic Development (MSc. CED).

One of the objectives of the course is to have students participate work with local growing NGOs to support them on a particular subject matter. I committed and identified your NGO to be one of them and would like to support you in the development of your organization on the areas where the organization will identify as of need. I hope this opportunity will be useful to me and your organization towards development of the women and Ifakara community.

Looking forward for your favorable considerations

Kind regards

Catherine Kisanga

**Appendix 2: Acceptance letter**

Chairperson,

St. Maria Magdalena Ifakara Women Group.

P.O.Box 11

Ifakara.

22<sup>nd</sup> November 2005.

Catherine Kisanga,

P.O.Box 235,

IFAKARA.

Re: Project Assignment in St. Maria Magdalena Ifakara Women Group.

The above heading refers.

On behalf of the organization, I'm great full to inform you that, your request has been accepted by the organization members.

It is our hope that, your studies in our organization will assist us to improve in our activities and organization as whole.

Looking forward to see you.

Thanks and welcome.

Yours truly,

Mrs C . Goa.

Chairperson

**Appendix 3:****PROJECT IMPLEMENTATION PLAN.**

OBJECTIVE: Improve social economic status of women in Ifakara by 2007.

Activities	Project Year 06												Year 07												Resources needed	Responsible Person.		
	MONTHE												MONTHS															
	1	2	3	4	5	6	7	8	9	10	11	12	1	2	3	4	5	6	7	8	9	10	11	12				
Proposal development.	√	√	√																								-Funds. -Stationeries. -Transport. -Venue. -	-Group members. -District Comm. and Cooperative Officers. -Community leaders. -CED student.
Tailoring training.	√	√	√	√	√	√	√	√	√	√	√	√	√	√	√	√	√	√	√	√	√	√	√	√	√	√	-Funds. -Stationeries. -Transport. -Venue. -	-Group members. -Out of schoolgirls (Trainees). -Parents.
Business Skills and Entrepreneurshi		√	√									√	√				√	√						√	√	-Funds. -Stationeries. -Transport.	-Group members. -Out of schoolgirls (Trainees).	

p training.																							-Venue. -	-Parents. -Facilitator (District Cooperative Dept) -Plan Int.Ifakara.
Provision of start up capital (sawing machines)	√						√					√							√				-Funds. -Sawing machines. Accessories	-Project management. -Trainees - Community/parents
Community awareness on HIV/ADS Prevention and control.					√	√	√	√											√	√	√	√	Funds -Transport. -Stationeries -IEC materials	-Group members -Community. -District Comm. Dev. Dept.(DAC) -Group members -Community. -District Com. Dev. Dept.(DAC)
Income generating activities. (300 uniforms)		√	√	√						√	√	√											Funds. -Clothes materials.	-Project Management/mem bers. -Trainees. -Plan. -KVTC. -Form Syd.
Income generating activities.		√		√	√									√	√	√							-transport. -Utensils -Foods	-Project Management/mem bers.

[illegible]

## Appendix 4. Monitoring Plan.

### Monitoring Plan

Objectives	Activities	Indicators	Data source	Methods/Tools	Person Responsible	Time frame.
-To develop a project proposal that will enable the organization to mobilize resources for project implementation.	<ul style="list-style-type: none"> <li>-Conduct meeting with stakeholders and community leaders to identity needs and resources.</li> <li>• Writing proposal for</li> </ul>	<ul style="list-style-type: none"> <li>• Number of meetings conducted.</li> <li>• Completion of the project proposal and submitted to donors</li> </ul>	<ul style="list-style-type: none"> <li>• Meetings.</li> <li>• CBO files</li> <li>• District reports.</li> <li>• Survey report.</li> </ul>	<ul style="list-style-type: none"> <li>• Reviewing reports and meeting minutes.</li> <li>• Field visit.</li> <li>• Interviews.</li> </ul>	<ul style="list-style-type: none"> <li>• CED student.</li> <li>• CBO members.</li> <li>• Two staff from District Community development and</li> </ul>	<ul style="list-style-type: none"> <li>• March to December 2006.</li> </ul>

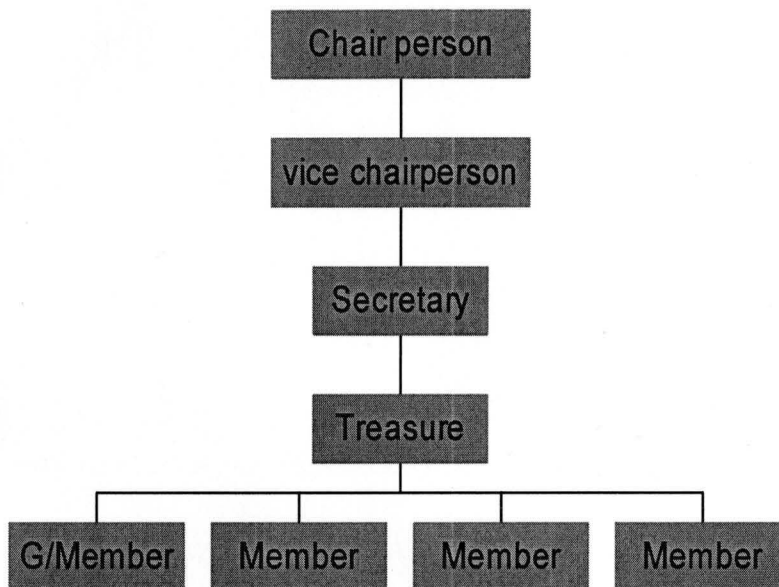
	funding.	for funding.			Cooperative department.	
Improved social economic status of women in Ifakara by the end of year	<ul style="list-style-type: none"> <li>• Conduct tailoring training to out of school girls.</li> </ul>	<ul style="list-style-type: none"> <li>• Number of out of school girls trained.</li> </ul>	<ul style="list-style-type: none"> <li>• Meeting minutes.</li> <li>• Training reports.</li> <li>• Attendances</li> </ul>	<ul style="list-style-type: none"> <li>• Review of minutes.</li> <li>• Review reports</li> <li>• Interview</li> </ul>	<ul style="list-style-type: none"> <li>• CED student.</li> <li>• CBO members.</li> <li>• Community</li> </ul>	<ul style="list-style-type: none"> <li>• April to December 2006.</li> </ul>

2007.	<ul style="list-style-type: none"> <li>• Provision of start up equipment to out pf school girls.</li> <li>• Provision of catering services to earn income.</li> </ul>	<ul style="list-style-type: none"> <li>• Number of out of school girls trained and supported with tailoring machines.</li> <li>• Number of catering services rendered to the community functions.</li> </ul>	<ul style="list-style-type: none"> <li>• register.</li> <li>• Store register.</li> </ul>	the trainees.	Developme nt Officer.	
-------	---	--	--	---------------	--------------------------	--



Enhanced entrepreneurship and informal employment opportunities among women between 18 to 55 years in Ifakara by the end of year 2007.	<ul style="list-style-type: none"> <li>• Conduct training of women and out of school girls on business skills and entrepreneurship.</li> </ul>	<ul style="list-style-type: none"> <li>• Number of women and out of school trained on business skills and entrepreneurship.</li> <li>• Number of women economic groups formed</li> </ul>	<ul style="list-style-type: none"> <li>• Training report.</li> <li>• Attendances register.</li> <li>• Trainees</li> </ul>	<ul style="list-style-type: none"> <li>• Review of report.</li> <li>• Review register.</li> <li>• Interview trainees.</li> <li>• Observation-field visit.</li> </ul>	<ul style="list-style-type: none"> <li>• CED student.</li> <li>• CBO members.</li> <li>• Cooperative Officer</li> </ul>	<ul style="list-style-type: none"> <li>• May to December.</li> </ul>
--	--	--	---	--	---	--

Reduced new spread of HIV/AIDS infection rates among people of in Ifakara by the year 2007.	<ul style="list-style-type: none"> <li>• Conduct awareness meetings to community.</li> <li>• Support of orphans with school supplies.</li> </ul>	<ul style="list-style-type: none"> <li>• Number of awareness meetings conducted to the community.</li> <li>• Number of Orphans supported with school supplies.</li> </ul>	<ul style="list-style-type: none"> <li>• Meetings minutes.</li> <li>• Communities.</li> </ul>	<ul style="list-style-type: none"> <li>• Review of the minutes.</li> <li>• Group discussion.</li> </ul>	<ul style="list-style-type: none"> <li>• CED student.</li> <li>• CBO members.</li> <li>• DAC.</li> </ul>	June to December . 2006.
---	--	---	---	---	--	--------------------------

**Appendix 5:****PROJECT ORGANISATIONAL CHART.**

**Appendix 6. Power Point Presentation**

## **WOMEN SOCIAL ECONOMIC EMPOWERMENT.**

Project Implemented by St. Maria Magdalena Ifakara Women Group  
Presented by Catherine Kisanga.

## **Introduction.**

- St. Maria Magdalena Women Group started in 2003.
- Located in Kilombero-Ifakara town.
- With group member 9 women.
- Ifakara Ward with population 45,684.

## **NEED ASSESSMENT.**

- Participatory Rural Appraisal meeting:-
- Poor house hold income.
- Inadequate knowledge on income generating.
- Inadequate secondary and vocational center.
- Increased spread of HIV and AIDS.
- Poor support to OVCs.
- Poor local governance and leadership.

## **Problem Statement.**

- About 58% of women live in difficult economic situation. (district poverty report 2003)
- 51.5% do not participate in decision-making. district poverty report 2003)
- Women vulnerable due to cultural and traditional practices.
- Lack of ownership of economic resources.
- Inadequate access to Secondary & Vocational
- Women vulnerability to HIV/AIDS.

## **Causes.**

- Low Community awareness on gender.
- Dependence on subsistence farming
- Inadequate education opportunity.
- Inadequate access to credit facilities.
- Low enforcement of gender and development policy by Government
- Existing cultural and tradition beliefs that hinders women development.

## **Research Methods.**

- Questionnaire
- Focus group discussion.
- Secondary data.
- Sampling:
  - Random sample-Women entrepreneurs and youth.
  - Purposive sample-Group members & government officials.

## Results.

- Low capital investment.
- Inadequate education to women.
- Inadequate knowledge on entrepreneurship.
- Inadequate income to meet basic needs.
- Existing poverty at household level.

## Results cont...

- Shortage of secondary school.
  - pupils passed exam but not selected to join secondary:
  - Year 2003 (41.1%)
  - Year 2004 (48.8%)
  - Year 2006 (68.2%)
- Prevalence of HIV/AIDS-11% (2006)

## IMPLICATION

- Inadequate education and business skills contributes to low income.
- Women are more vulnerable to situation as they bear the responsibility of taking care to the family.
- Some traditional culture and norms contributes to women vulnerability.
- Existing poverty fueling the spread of HIV and AIDS and women are the most affected group.
- Children potentials are limited due to the limited chances for education.

## PROJECT IMPLEMENTATION.

- Project Proposal developed for funding.
- Activities implemented:
  - Tailoring training to female out of school.
  - Start-up capital provision sewing machine.
  - Business skill training to female/women.
  - Gender awareness meetings to community.
  - OVCs support with school supplies.
  - HIV/AIDS prevention and control awareness to community.
  - Catering services

## Monitoring & Evaluation.

- Monitoring process:
- Trainee attendances register.-40 girls trained and supported with sewing machines)
- Records keeping and Bank reconciliation.
- Material consumption .
- Beneficiary tracking.-
- Training and meetings reports.

## Monitoring cont.....

- Performance of Income generated groups.(Tshs 30,000 to 90,000 per month).
- Awareness meetings conducted on HIV/AIDS control and prevention.-4 meetings
- Gender meetings conducted to the community.-4 meetings.

### **Evaluation.**

- Midterm evaluation planned January 2007.

Method- Participatory ( Group members, stockholders)

### **Sustainability.**

- Community need identification. (felt need)
- Members contribution fees)
- Cost sharing through tuition fees.
- Income generating activities aspect.
- Capacity building aspect included.
- Within poverty reduction strategy/National vision 2025 and MDG.

### **Recommendations cont...**

- Strengthening the capacity of financial Institutions.-provide credit and trainings.
- Improving farming methods.
- Improving policy and legal frame work.
- Increase commitment in HIV/AIDS prevention and control at grass root level.
- Increase advocacy on gender awareness to community level.

### **Recommendations.**

- Local government to give priority support to women group in district plan.
- Capacity building on entrepreneurship.
- Government and NGOs support secondary and vocational centre.
- Creating enabling environment for women economic development.-soft loans, revolving funds.