

APPENDIX I**COMMUNITY PROFILE:
THE BOIS-FRANCS REGION OF THE PROVINCE OF QUÉBEC ¹²**

The Bois-Francs region of Québec (160 kms east of Montréal) is made up of 48 municipalities, only 5 of which have a population over 3,000. The total population is \pm 83,000 spread out over nearly 3,200 square kilometers. The region is semi-rural, 40% of the population lives on the more or less 95% of the land which is zoned for exclusive agricultural use although the rural population has sharply shifting away from farming activities in recent years.

Its demographics are similar to the rest of rural Québec: 98% of its population is of *Québécois* origin with over 85% being unilingual francophones, relatively young but ageing rapidly. The birthrate is stable and families are small. Single-parent families account for 12% of all families; only 48% of all couples living as families are married. Over two-thirds of housing is individually owned.

Ten years of economic development have nurtured an entrepreneurial spirit which has resulted in a diversified economy made up mostly of small to very small businesses (a mere 20 have over 100 employees with only one having over 300; a full 85% of all industries now have fewer than 50 employees). By far the largest employers are the health and welfare network of hospitals and other institutions and the educational system, including the local community college, the public and private schools and the school boards. (This is not an intellectual area however: there's no university here and the few libraries are almost a farce.) While textile and wood-related industries with their large plants were dominant up to ten years ago, most manufacturers today are subcontractors in an eclectic variety of fields and the manufacturing-related service sector is showing the most rapid growth.

The more traditional approach to economic development has not, however, addressed the needs of specific target populations. Close to 30% of the labour force receives unemployment insurance (mostly young people and women) or welfare benefits with youth being hit hardest:

¹² All of the statistics in this section have been taken from the community profile which I prepared for the Community Economics course (89/10/20). Should it be required, I can furnish a copy of the profile or a list of all references on request.

9.5% of the population between 16 and 24 is on welfare; 25% of all welfare recipients are persons under 30. Salary levels are quite low — as is often the case with smaller businesses combined with a weakening private sector labour union movement — averaging a paltry \$ 369 a week compared to the provincial mean of \$ 456. Since these statistics include the professionals in the public sector, the manufacturing wages are definitely even lower. Latest available statistics indicate that over 30% of the population is under the poverty line with the lowest half of the population earning about as much in revenues as the top 6%.

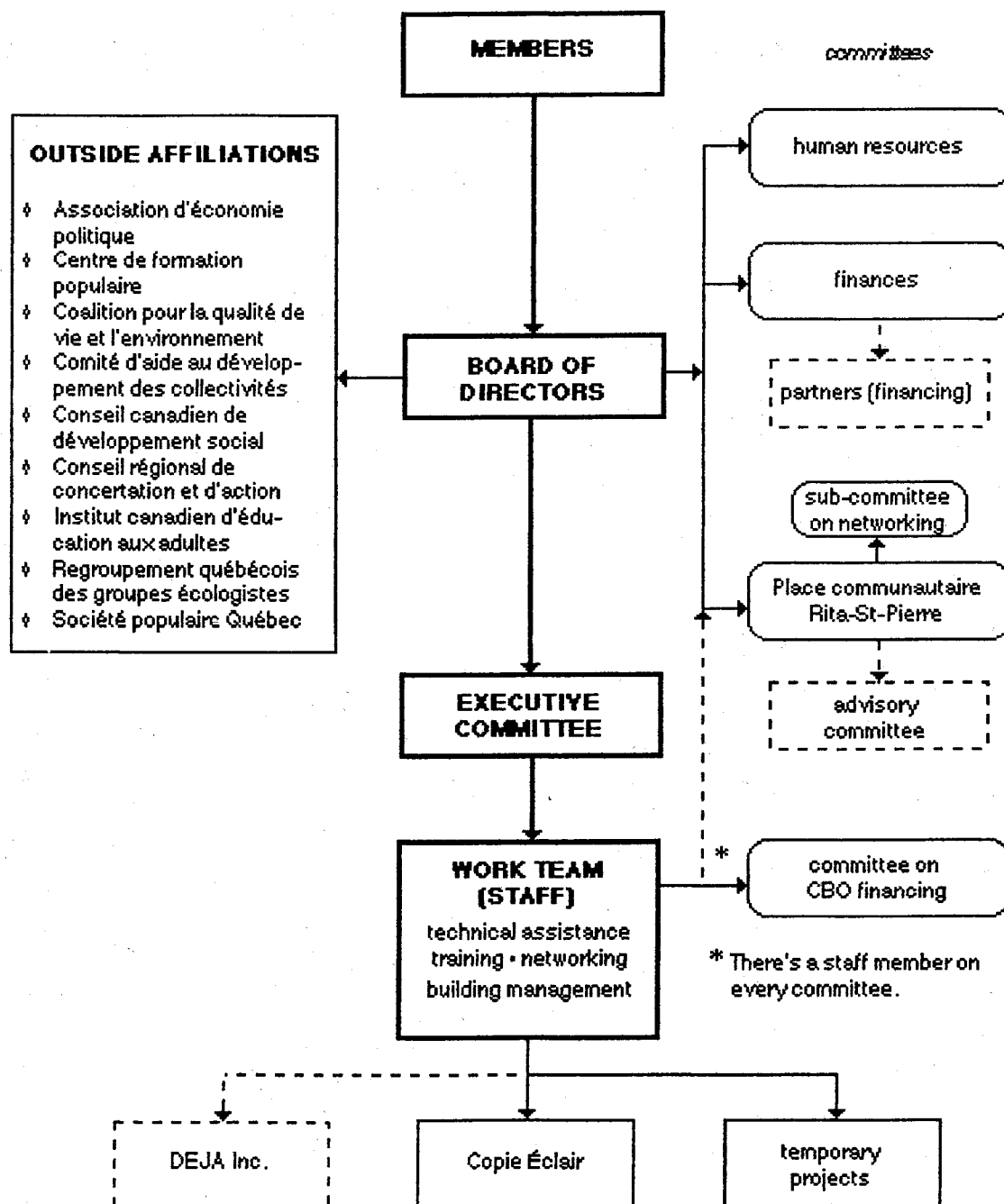
Twenty years of community development have enabled many people to find solutions to a great many problems caused by the situation outlined above, mostly by the setting up of a wide variety of community-based organizations and co-operatives (over 90 at last count). Most are members of the *Corporation de développement communautaire des Bois-Francs* (CDCBF), a non-profit umbrella group offering technical assistance, training and networking activities to its membership and to new community-based organizations. The CDCBF also plays an advocacy role as pertains to social issues in general and community development in particular.

Notwithstanding the two worker co-operatives set up in the last few years, most community initiatives related to specific economic problems have not worked out very well. Consumer co-ops are in decline and nothing new is planned in this field. The economic impact of the community development sector has been internal with its own labour force growing steadily as needs rise. In a nutshell, community *economic* development has not been part of the CDCBF's past strategy: aside from there being few CED tools available for unilingual francophones, there is also an underlying fear of having to compromise principles when working towards economic goals.

A growing solidarity has emerged among community leaders since the late spring of 1988 when a steering committee was set up to oversee the Bois-Francs' participation in the following year's regional economic summit. These twenty-odd men — regrettably *sans femme* — from various sectors (including that of community development through the CDCBF) now also find themselves part of the board of directors of the *Comité d'aide au développement des collectivités*, a newly-formed group whose mandate is community economic development in a more traditional sense (Community Futures Program).

APPENDIX II

ORGANIZATION CHART OF THE CDCBF



APPENDIX III

MEMBERS OF THE CDCBF

Advocacy groups and various services (26 members)

	type of activity	own bldg	rent	
			PCRSP	other
- ACEF des Bois-Francis	consumers		✓	
- Association de familles monoparentales La Source Inc.	single parents		✓	
- Association des consommateurs-trices handicapés-es des Bois-Francis Inc.	handicapped		✓	
- Association des locataires des Bois-Francis	tenants		✓	
- Association Parents-Ressources des Bois-Francis	parenting		✓	
- Atelier communautaire de meubles de Victoriaville Inc.	furniture recycling			✓
- Carrefour d'entraide bénévole	volunteers	✓		
- Centre d'action bénévole "Contact"	volunteers			✓
- Centre de relèvement et d'information social (CRIS)	relief (all)			✓
- Centre d'hébergement l'Entre-temps Inc.	shelter battered			✓
- Centre Handicapés Physiques Bois-Francis Inc.	handicapped	✓	jan 90?	
- Collectif d'intervention économique et communautaire de la région de Plessisville	youth entrepreneurship			✓
- Dépannage 15-30 des Bois-Francis	relief (youth)		✓	
- Garderie éducative Rayon de soleil Inc.	day care centre			✓
- Garderie Fleur de Soleil Inc.	day care centre			✓
- Garderie populaire coopérative "La Maison des Amis"	day care centre	✓		
- Halte Bois-Francis Inc.	male violence		✓	
- Maison des femmes des Bois-Francis	women's centre			✓
- Maison des jeunes "Le Trait d'Union"	youth centre	✓		
- Récupération Bois-Francis inc.	recycling (paper...)			✓
- Recyclovesto Inc.	recycling (clothing)		✓	
- Regroupement des familles monoparentales de Plessisville	single parents			✓
- Regroupement des sans emploi de Victoriaville	unemployed		✓	
- Résidence Le Hublot inc.	shelter homeless		✓	
- Rouli-Bus Inc.	transportation (hand.)		✓	
- Télévision communautaire des Bois-Francis Inc.	community TV			✓

Associate members (individuals) (16 members)

(continued on the following page)

Cooperatives and member-oriented activities (12 members)

	type of activity	own bldg	rent PCRSP	rent other
- Club coopératif de consommation de Princeville	food market	✓		
- Club coopératif de consommation de Victoriaville	food market	✓	jan 90?	
- Club coopératif de consommation Vic-Denrées	food market		jan 90?	✓
- Club coopératif de consommation Vic-Entrain	butcher shop		✓	
- Coopérative d'aliments naturels « La Huche »	natural foods			✓
- Coopérative d'aliments sains « La manne »	natural foods			✓
- Coopérative de travail en entretien d'édifices « La salubrité »	worker coop		✓	
- Coopérative des travailleuses et travailleurs de théâtre des Bois-Francis (Le Théâtre Parminou)	worker coop	✓		
- Coopérative d'habitation Belle-Vie	housing coop	✓		
- La coopérative funéraire des Bois-Francis	funeral services	✓		
- Les Habitations Vic Inc.	housing coop	✓		
- Orthopro Enr. (26181313 Québec Inc.)	worker coop			✓

Associate members (organizations) (16 members)

- Agence de services de garde en milieu familiale	child care		jan 90?	
- Bureau local d'intervention traitant du sida	aids self-help			n/a
- Café Chrétien Victo Inc.	Xian youth	✓		
- CLSC de l'Érable	gov't services	✓		
- CLSC Suzor-Coté	gov't services	✓		
- Développement de l'entrepreneurship-jeunesse Arthabaska (DEJA) Inc.	youth entrepreneurship			✓
- Espace Bois-Francis	abused children		✓	
- L'A.F.A.M. Inc.	parenting			n/a
- Les Amis du Partage du Centre du Québec Ltée	Xian businessmen			n/a
- Productions Plateforme Inc.	music festival			✓
- Programme d'action communautaire PACTE Bois-Francis	juvenile delinquency		✓	
- Rallye Tiers-Monde Bois-Francis Inc.	int'l solidarity		✓	
- Regroupement de promotion pour personnes handicapées 04 sud	handicapped		✓	
- Restaurant populaire	soup kitchen		✓	
- Services de garde à l'enfance l'Arc-en-ciel	drop-in day care		✓	
- Sobriété du Canada, région des Bois-Francis Inc.	alcohol abuse			n/a

APPENDIX IV**PRINCIPLES RELATING TO THE PURCHASE OF THE
HYDRO-QUÉBEC BUILDING ¹³**

The purchase by the CDCBF of the building owned by Hydro-Québec was authorized provided that the following principles be respected:

- ◇ all community-based organizations that are members of the *Corporation de développement communautaire des Bois-Francs* are to be consulted on the use of the building whether they be potential tenants or not;
- ◇ the acquisition of the building must meet the specific needs of the community-based organizations: no community-based organization will be asked to become a tenant with the sole objective of financing the premises; we will not seek to create artificial needs;
- ◇ the tenancy of a community-based organization in this building must not have a adverse impact on its programs and we will have to be wary of becoming bureaucratic in such a large building;
- ◇ financial self-sufficiency will be an absolute necessity: we do not want to encounter losses nor we do not want a white elephant; however, the financing of the costs of occupying the building must take into account the tenants' ability to pay;
- ◇ the building must be a development tool for all of the community-based organizations ¹⁴;
- ◇ the building must stimulate vitality, dialogue, and public visibility and influence of the community-based organizations.

¹³ Personal translation of the principles adopted at the special general meeting of the *Corporation de développement communautaire des Bois-Francs Inc.* held on December 10th, 1987.

¹⁴ Members of the CDCBF or not, tenants in the building or not.