

Provost Newsletter

Issue 54 | Southern New Hampshire University | November 16, 2015



Provost Welcome

Dr. Patricia Lynott

This semester is absolutely flying by and I can't believe that we are already approaching the Thanksgiving holiday! Just a few things I'd like to share with you. First, I want to give a big shout-out to Meagan Sage, Director of Student Involvement, who chaired the NACA (National Association for Campus Activities) Northeast Regional Conference in Hartford, CT. The conference had over 1,300 delegates and hundreds of exhibitors, showcased over sixty acts, and provided dozens and dozens of informative and educational sessions. Student Ben Harris received the "Student Leader of the Year" award, and our programming board, CAPE, was awarded the Excellence in Programming honor. The conference's Outstanding Professional award went to an SNHU alumna, Casey Bandarra.

In other exciting news, I am proud to announce that Sheila Lambert, Director of the Wellness Center, co-authored a chapter in *Colleges in the Crosshairs: an Administrative Perspective on the Prevention of Gun Violence* published by the American College Personnel Association. SNHU is mentioned as one of two universities in providing best-practice comprehensive violence prevention programs. And while it

seems that every week we hear some story about various shootings or incidents of violence on campuses across the country, I want to assure everyone that we have a very low profile, yet very actively engaged Crisis Management Team. This group meets regularly and works diligently to ensure a very safe campus environment for all of our students and employees.

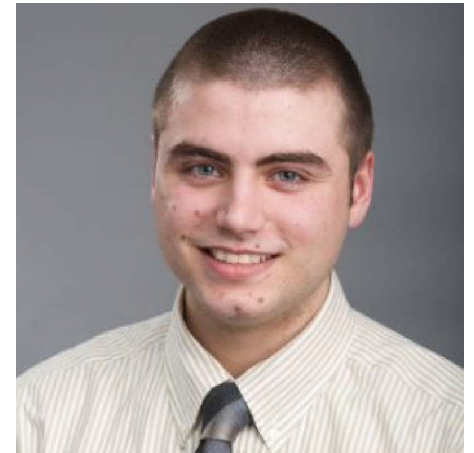
Danielle Stanton, Chief Human Resources Officer, and Yvette Clark, General Counsel, were guest speakers at the NHCUC CFO/VPAA Council Meeting on November 12th. Danielle and Yvette presented information on the various options SNHU is exploring in terms of proactively addressing the needs and goals of our extremely important contingent faculty.

A big congratulations to Chef Karina Pasternak on the November 9th arrival of her second daughter, Ava Claire. Both mother and daughter are doing well.

And lastly, while we all love our coffee from the Dining Center, or from the River Road Café in the Academic Building, I want to remind everyone that the Cup of Love Café in the Hospitality Building serves a great cup of coffee as well! Stop by Monday through Friday, 7:00am to 3:30pm.

Staff Highlight

Alicia Frazier



From student to staff, Patrick Tobin was a graduate from the Bradley Three Year Honors Program last spring with a BA in Business Administration and a specialization in marketing. After graduation, Tobin found himself working at the Dyn business company in Manchester. He now finds himself back at Southern New Hampshire University...Continues pg. 2.

What's in this issue?

The new CareerEdge!	Pg. 2
Learning Communities	Pg. 3
ASCD's First Conference	Pg. 4
COCE Updates and News	Pg. 5

NEW! Career Development Center Introduces CareerEdge!

Career Development

Highlights of CareerEdge:

The SNHU campus has a lot happening, but how do students and faculty stay informed on Career Development updates and available opportunities? Our office felt this dilemma and spent the summer developing a new communication platform, CareerEdge, to engage students and the community on career related information, resources, and highlighted internships and jobs. The best part is you can sign up for CareerEdge email alerts to receive weekly updates.

SNHU Recruit will remain our database for all jobs and internships, and CareerEdge is used to highlight premier opportunities. CareerEdge website includes a link to access SNHU Recruit.

We invite all faculty and staff to sign up for email alerts to stay informed on career information! Signing up for email alerts is only available on desktop at this time and plans are underway to have mobile email sign up options available soon.

- Students receive personalized communication based on major and industry interests, job types (internships vs. full-time employment), event categories, and career information (resume, interviewing, graduate school). Faculty/staff receive emails with general updates.
- Mobile friendly! (SNHU Recruit and CDC website not currently mobile friendly)
- Student Blogs – our office has hired one of our very own seniors to develop fun and engaging blogs on various career topics.
- Specific major resources – a great space for collaboration between CDC and faculty to include career resources, articles and more! Let us know if you're interested in contributing.
- Highlighted jobs and internships – engaging videos to promote learning more on the company or specific position(s).
- Upcoming events – includes LinkedIn workshops, networking events, industry panels, employer information sessions, employer site visits and more!



Here are instructions to sign up today!

- Visit <http://careeredge.snhu.edu/> and click on the “Manage CareerEdge Alerts” tab on bottom of screen
- Select Faculty/Staff icon
- Use blue arrow icons to navigate to next options
- Enter email and desired frequency
- Enter password and DONE!

Please encourage your students to read weekly email alerts and manage email alerts to refine information. Contact the Career Development Center with any questions at careerdevelopment@snhu.edu.

Continued from pg. 1...working as the Assistant Director of Institutional Research. In this role Tobin works with three major categories, Compliance Reporting, Operational Reporting, and Behavioral Analytics. “There is so much use for all the data we have. It can be hard to choose what to do with only eight hours in the day!”, said Tobin.

When asked about the transition from student to full time employee, Tobin said the switch was smooth as he always worked multiple jobs in college. The skill transfer, skills he learned from working and being involved on campus, was also a benefit for Tobin. In his new role, one of his main focuses is to simply learn from everyone.

He explained the importance of knowing your work environment and understanding the behavioral impacts others have on you and you have on them.

Learning from others is key in the world of higher education. One of the biggest influences for Tobin is Dr. Karen Stone. He said, “She has taught me so much on what it means to be a professional.”

In the office, Tobin and others formed a team and vouched not to shave for the *Movember* Charity, which supports men's health. Like his attitude towards work, positive and determined, he invites others to, “Join our team! There is still room and you never know how you can make a difference.”

SNHU Learning Communities Give Back to Local Community

Rane Hall and Kelley Hobbs

“Mrs. Say, this is the best field trip I have ever been on!” said one of the third graders at Beech Street School, during a recent apple-picking trip to Elwood Orchards, in Londonderry, New Hampshire.

The morning of Mrs. Say’s field trip to the apple orchard was rainy and overcast, but by the time the school bus arrived to the Elwood Orchards, the rain had stopped, and the somber grays of the October sky were sharpening and deepening the smells, shapes, and colors of the autumn landscape. The children could see the apple trees waiting, dark and pungent, assembled in their serried ranks to offer ease to the picker’s hands, and also somehow, to offer tribute to the ancient symbol of their own abundance.

Beech Street School, located in down town Manchester, has the highest poverty rate of any elementary school in the state. 97% of Beech Street students receive free or reduced lunch; 9% of the kids are homeless. The socio-economic challenges Beech Street students face outside of their classrooms present a real threat to their learning, to their healthy development, and to their perceptions of their futures. At the same time, the challenges that the Beech Street students face are no different than those that we all face. Questions about identity, about the practice and value of learning, and about our responsibilities to each other are critical to humans everywhere, and in every walk of life.

And so it shouldn’t be surprising that a small group of Southern New Hampshire University faculty, staff, and students, dedicated to understanding themselves and their roles in society, embarked on an experiment in service learning that would introduce them to our neighbors at the Beech Street School, and involve them—together—in a traditional New England rite of passage: fall apple picking!

Under the auspices of SNHU’s Center for Community Engaged Learning and the Manchester School District, third graders in Mrs. Say’s class are an integral part of one of our first-year learning communities at SNHU this fall. In higher education, a learning community refers to a cluster of courses—usually between two and four—linked under a common academic concept or theme, as well as by a common cohort of students. At SNHU, The Natural Resources and Social Change Service Learning Community is comprised of SNHU 101, taught by Assistant Director of the Center for Community Engaged Learning, Kelley Hobbs; Introduction to Environmental Science, taught by Dr. Joseph Corbin; and Introduction to Sociology, taught by Dr. Francis Catano. All three of these classes represent one learning community, engaged in studying how food is produced, in reflecting on the cultural aspects of food, and in analyzing some of the ethical issues associated with food. Of course, they are also united by the energizing experience of applying academic content to the real world,

by giving back to their community.

About once a month, our SNHU service learning community joins the Beech Street third graders to work on mutual projects. Aside from picking apples together, they have planted two pineapple trees, three avocado plants, and two elephant ears, now growing in containers tended by the children in their Beech Street classroom. It is safe to say that Mrs. Say’s third graders are reaping the joys of learning that takes them beyond their classroom walls and worksheets. Less safe to say, but perhaps more important, is the possibility that the students are also in the process of seeding their own minds with a powerful idea: the idea of access to college.

In the coming months, SNHU will host a visit from Mrs. Say’s third grade class, here at SNHU. Until that time, Kelley Hobbs’ SNHU 101 students will continue to nurture their pen-pal relationships with the third graders, which have fostered not only friendship, and communication skills, but also eye-opening cultural exchange. For example, after reading one of her pen pal’s letters, a SNHU student said, “I only speak one language. My third grader speaks five and she’s lived in three countries!”

In higher education, both learning communities and service learning courses are deemed “high impact practices,” because research has shown that they have a positive impact on student learning, satisfaction, and persistence in college. In addition, both learning communities and service learning courses hold the exciting possibilities of facilitating the transfer of cognitive skills across disciplines and into the real world—pretty much the holy grail of formal education.

This fall we are proud to be running three learning communities for our first year students. Besides the service learning community discussed in this article, we are also running The Psychology of Justice Learning Community,

Continued on pg. 4...



SNHU Student at Beech St. Elementary School.

Photo Credit: Kelley Hobbs

Continued from pg. 3...taught by Craig Wiggin (JUS 101), Dr. Christina Muise (PSY 108), and Elizabeth Richards (SNHU 101); and The Environmental Issues Learning Community, taught by Dr. Allison Cummings (ENG 120), Dr. Michelle Goldsmith (SCI 219), and Sarah Stearns (SNHU 101). The faculty and staff employed in these learning communities have met formally and informally to compare syllabi, to analyze their students' learning, and to consider extracurricular opportunities for their classes. And so far, their students appear to be reaping the rewards of all of their efforts.

According to Kelley Hobbs, "The students in our classes are engaged. They feel more comfortable speaking and working together in class, and they look out for each another."

The pioneers working to develop our learning communities and service learning at SNHU deserve our attention, praise, and greater institutional investment. They are doing good work, which we hope to assess, develop, and appropriately reward in the coming years.

If you would like to know more or become involved in learning communities or service learning here at

SNHU, please contact Rane Hall, Assistant Dean of General Education and Kelley Hobbs, Assistant Director of the Center for Community Engaged Learning.

And, next time you see Kelley, Joseph, or Frank on campus, simply ask them about their experiences teaching in a learning community. Ask them what they think about service learning. And ask them about Mrs. Say's class, which offers an apple not only to the teachers, but to everyone involved in the production and harvest of knowledge this fall at SNHU and beyond.

School of Education and ASCD Host First Conference

Lauren Johnson

For many who teach, they have known working in the field of education was something they had wanted to do for a long time. Now the specific reason of why they wanted to get into the field varies, but most lead back to a pure passion. If you have a passion for teaching it is noticable from any seat in the classroom. In addition to guidelines, this is what the School of Education helps students foster.

On Saturday October 24, 2015, SNHU's student Association for

Supervision and Curriculum Development, ASCD, Chapter held their very first conference on campus. This conference consisted of five different speakers, educational workshops, and 60 students attended. In addition to SNHU students attending, students were invited and attended from Plymouth State University and University of New England.

The conference's keynote speaker, Nabil Magalli, is the president of the Arab-American Forum. His work centers on increasing understanding between different cultures within the educational sector. After the conference, students defined Magalli as a very powerful speaker, after his session called "Deeper Conversations", which provided students the opportunity to ask questions and further explore multicultural perspectives.

Other sessions included "Opening the Doors for Your First Job", where students learned interesting strategies, tips, and suggestions from former principal,

Dr. Denise Benner. Dr. Benner has been a professor at SNHU since 2010. Prior to being at SNHU, she served the New Hampshire Department of Education. Her role included working with the NH Administrative Rules for Certification of Education Personnel and the approval of Teacher Preparation Programs. Her career in public school administration and teaching has spanned almost 40 years.

The SNHU ASCD chapter will continue to provide students with educational opportunities to expand the skills they learn inside the classroom. Thanks to the School of Education, and professors such as Dr. Benner, students will have these opportunities right on campus. Keep on the look out for more upcoming events from ASCD and the School of Education!



COCE Updates, Highlights, and Exciting New to Share

Michelle Dunn

Grace Hopper Celebration of Women in Computing

>>>STEM Associate Dean, Angie Foss, co-hosted a viewing party at Facebook in Cambridge, Massachusetts, for the Grace Hopper Celebration of Women in Computing conference in Houston, Texas, in October. Foss served as Boston Local Community Leader for the Systems Community. In addition, the university selected 15 online students to attend the conference in person.



15 SNHU Online Students who attended the conference.

Photo Credit: SNHU

NH Presidential Primary Campaign

>>>As the New Hampshire Presidential Primary heats up, Undergraduate and Graduate Marketing and Student Recruitment have launched a series of efforts to enhance SNHU's profile and attract more interest in our political science degrees. With the assistance of SNHU Civic Scholar Dean Spiliotes, the teams created five videos that explain the history and evolution of the New Hampshire Primary. In addition, SNHU has partnered with WKXL radio to launch "On the Campaign Trail," a series of interviews with the presidential candidates that focus on education issues. The first interview, with Sen. Rick Santorum, was released in late October. Subsequent candidate interviews are planned for release each Tuesday. Check out the SNHU Facebook page for updates.

Fall 'Insights' Magazine Is Live

>>>Read about innovative tools being used in our online classrooms, SNHU Career success stories, our students in the Garden City Police Department and so much more in the fall issue of Insights magazine, now available [online here](#).

SNHU, MLS and Philadelphia Union Soccer Team Up

>>>SNHU joined partners from Major League Soccer and the Philadelphia Union soccer team to unveil a mini-pitch in Chester, Pennsylvania. This effort was part of the 20 for 20 Mini-Pitch Initiative, a commitment with MLS to build 20 mini soccer fields in franchise cities. These mini-pitches will provide children in underserved communities with a safe place to play in conjunction with after-school programming run by the U.S. Soccer Foundation.

STEM in Londonderry

>>>Members of the COCE Academics STEM team joined eighth graders at Londonderry Middle School for an afternoon of STEM projects in October. This STEM event was organized by the Southeastern Regional Educational Service Center (SERESC), which reached out to SNHU for being a leader in STEM education. Academic Specialist, Kelly Cackett, Outcomes and Assessment Specialist, Jennifer Oquist, and Associate Dean, Angie Foss, developed an afternoon of STEM fun for the middle school students.

***The Provost Newsletter
Office of Academic Affairs
Southern New Hampshire University
Academic Center, Suite 107
2500 North River Road
Manchester, NH 03106
T: 603.645.9695
F: 603.645.9610
E: vpaa@snhu.edu
Editor: Alicia Frazier
E: alicia.frazier@snhu.edu***